

Vzorkovník platný pre produkty začínajúce písmenami **PR**

ČALÚNENIE STANDARD

ALBA (FIDIVI) - PRICE GROUP 0

Alba is a uni-coloured polyester fabric with a grainy texture. The weave construction play with light and add depth to the colours.

Composition: 100% polyester

Weight: 320 +/- 5% g/m²

Abrasion resistance: 100 000 Martindale (EN ISO 12947-2)

Flammability: BS EN 1021: 1-2 (Cigarette & match), CA TB 117-2013, BS 5852 Crib 5, BS 7176 Medium Hazard, UNI 9175 Class 1 IM

Light fastness: 6 (EN ISO 105 - B02: 2013)

Rubbing fastness: 4/5 (Wet/Dry) (ISO 105-X12)

Pilling: 5 (EN ISO 13945-2)

Environmental facts: Oeko-Tex® Standard 100, Indoor Advantage™ "Gold", non-metallic dyestuff, does not contain flame-retardant chemicals, ISO 14001 certified company.

Design: FIDIVI Design Team

Produced in: South Korea

Cleaning & disinfection: Washable up to 60°, dry cleanable with perchloroethylene, cleanable with steam, bleach and the most common sanitizing agents. (For further info follow FIDIVI's cleaning guidelines – www.fidivi.com)



EVO - PRICE GROUP 0

Evo is a uni-coloured polyester crepe fabric. The irregular weave structure add shine and good stretch.

Composition: 100% polyester

Weight: 320 g/m²

Abrasion resistance: 180 000 Martindale (EN ISO 12947-2)

Flammability: BS EN 1021: 1-2 (Cigarette & match)

Light fastness: 4-5 (EN ISO 105-B02)

Rubbing fastness: 4-5 (Wet/Dry) (EN ISO 105-X12)

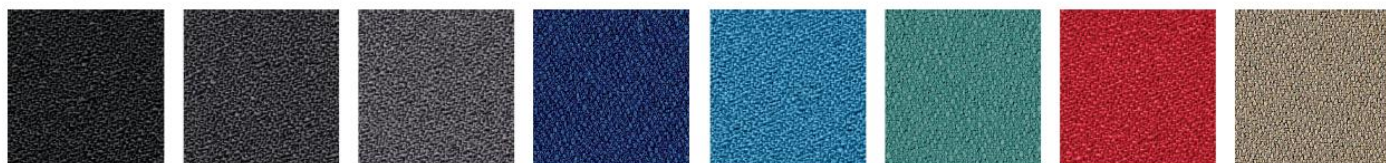
Pilling resistance: 5 (EN ISO 12945-2)

Environmental facts: EU Ecolabel, Oeko-Tex® Standard 100, ISO 14001 certified company

Design: Miranda Design Team

Produced in: Poland

Cleaning & disinfection: Dry cleaning with tetrachloroethylene and water solution of carbonate fluoride



NEXT - PRICE GROUP 0

Next is a polyester fabric in solid and mixed colors. It is lightly textured with a semi-gloss surface.

Composition: 100% polyester

Weight: 340 g/m²

Abrasion resistance: 100,000 Martindale (EN ISO 12947-2)

Flame safety: BS EN 1021: 1-2 (Cigarette & match)

Light fastness: 5 (EN ISO 105-B02)

Rubbing resistance: 4-5 (Wet/Dry) (EN ISO 105-X12)

Picking resistance: 5 (EN ISO 12945-2)

Environmental facts: Oeko-Tex® Standard 100, ISO 14001 Certified company

Cleaning and disinfection: Dry cleaning with tetrachlorethylene and aqueous solution of carbonate fluoride



CURA (GABRIEL) - PRICE GROUP 1

Cura is a two-coloured fabric made from 98% post-consumer recycled polyester. It has a matt, slightly irregular and natural-looking texture where the dark, underlying grey fibers create a discreet yet vibrant melange effect. High durability and stretchability and its soft, voluminous touch make Cura suitable for both office and lounge furniture.

Composition: 100% post-consumer recycled polyester

Weight: 420 g/m²

Abrasion resistance: 100 000 Martindale (EN ISO 12947-2)

Flammability: BS EN 1021: 1-2, BS 5852 0&1, CA TB 117-2013, ASTM E 84 Class I

Light fastness: 5-8 (EN ISO 105 - B02)

Rubbing fastness: 4-5/4-5 (Wet/Dry) (EN ISO 105X12)

Pilling: 4-5 (EN ISO 12945-2)

Environmental facts: EU Ecolabel, Oeko-Tex® Standard 100, Contains no Flame Retardant chemicals, ISO 14001 certified company

Design: Cenk Kivrikoglu

Produced in: Lithuania

Cleaning: Wash or dry cleaning, Can be disinfected with ethanol and is bleach-cleanable (For further info follow Gabriel´s cleaning guidelines – www.gabriel.dk)



MEDLEY (GABRIEL) - PRICE GROUP 1

Medley is a polyester fabric constructed from melange yarns in a simple, geometric structure. Its tight texture and changing structure of the yarn create a lively colour effect on the surface.

Composition: 100% polyester

Weight: 364 g/m²

Abrasion resistance: 75 000 Martindale (EN ISO 12947-2)

Flammability: BS EN 1021: 1-2 (Cigarette & match), CA TB 117-2013, BS 5852 0&1

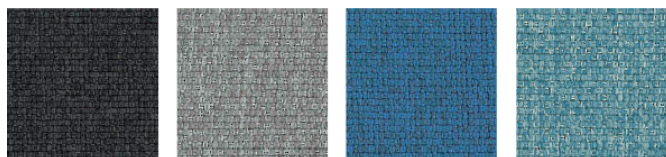
Light fastness: 5-7 (EN ISO 105-B02)

Rubbing fastness: 4-5 (Wet/Dry) (EN ISO 105-X12)

Pilling resistance: 4 (EN ISO 12945-2)

Environmental facts: Oeko-Tex® Standard 100, no flame retardant chemicals, recyclable, ISO 14001 certified company

Cleaning & disinfection: Washable up to 74° and bleach cleanable. (For further info follow Gabriel´s cleaning guidelines www.gabriel.dk)



SPRINT (CAMIRA) - PRICE GROUP 1

Sprint is a classic stretch knit fabric made from 100% polyester. It has a multi-directional stretch with a design based on a smooth cellular construction that adds a smooth and light expression.

Composition: 100% polyester

Weight: 325 g/m²

Abrasion: > 100 000 Martindale

Flammability: BS EN 1021: 1&2 (Cigarette & match), BS 7176: 2007 Low Hazard, BS 476 Part 7 Class 1, UNI 9175 Klasse 1 IM, CA TB 117-2013

Light fastness: 5 (EN ISO 105-B02)

Rubbing fastness: 4/4 (Wet/Dry) (EN ISO 105X12)

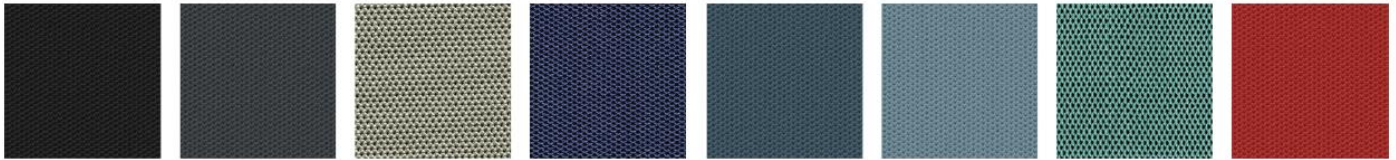
Pilling: 4/5 (BS EN ISO 12945-2)

Environmental facts: Non metallic dyestuffs, Indoor Advantage™ "Gold", ISO 14001 certified company

Design: Camira Design Studio

Produced in: China & United Kingdom

Cleaning & disinfection: Washable to 60 °C and bleach cleanable (For further info follow Camira's cleaning guidelines – www.camirafabrics.com)



TONAL (GABRIEL) - PRICE GROUP 1

Tonal is a post-consumer recycled polyester fabric in a two-coloured melange. It has a discreet textured look with a fusion of light and dark tones adding depth to the colours.

Composition: 99% post-consumer recycled polyester, 1% polyester

Weight: 315 g/m²

Abrasion resistance: 100 000 Martindale (EN ISO 12947-2)

Flammability: BS EN 1021: 1-2, BS 476 Part 7 class 1, CA TB 117-2013, ASTM E 84 Class I

Light fastness: 6-8 (EN ISO 105 - B02)

Rubbing fastness: 4-5/4-5 (Wet/Dry) (EN ISO 105X12)

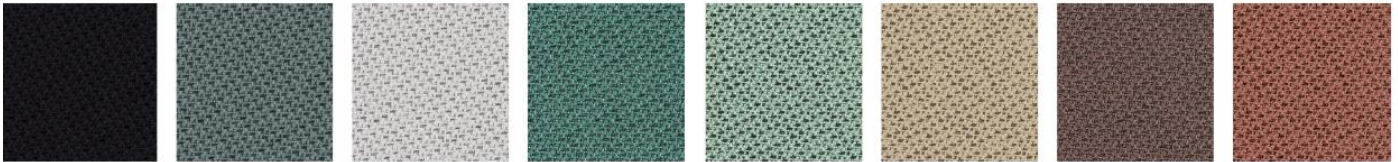
Pilling: 4-5 (EN ISO 12945-2)

Environmental facts: EU Ecolabel, Oeko-Tex® Standard 100, Contains no Flame Retardant chemicals, ISO 14001 certified company

Design: Cenk Kivrikoglu

Produced in: Lithuania

Cleaning: Wash or dry cleaning. Can be disinfected with ethanol and is bleach-cleanable (For further info follow Gabriel's cleaning guidelines – www.gabriel.dk)



VALENCIA - PRICE GROUP 1

Valencia is a PVC based synthetic leather with a leather grain look. It has a Permablok3 finish adding protection against growth of fungi and bacteria making it suitable for healthcare environments. With high durability and flammability performance, and easy cleanable on a regular basis.

Composition: 100% PVC (100% polyester backing)

Weight: 650 gr/m²

Abrasion resistance: >300 000 Martindale (EN ISO 12947-2)

Flammability: BS EN 1021: 1-2 (Cigarette & match), IMO FTP 2010 Code MSC.307 (88) Part 8 3.1 & 3.2, CA TB 117-2013 Section E, DIN 4102 B2, NF P 92-503/M2, UNI 9175 (1987) / UNI 9175/FA1 (1994) Classe 1.IM (UNO I EMME)

Light fastness: 7/8 (Blue Wool scale) ISO 105 B02

Environmental facts: Greenguard gold, ISO 14001 certified company, Indoor Air Emission A+

Design: Spradling Design Team

Produced in: Germany

Cleaning & disinfection: For info follow cleaning guidelines www.spradling.com



XTREME (CAMIRA) - PRICE GROUP 1

Xtreme is a crepe fabric made from 100% post-consumer recycled polyester that features exceptional Euro flammability performance. Extra stretch and structure gives an irregular, shiny finish.

Composition: 100% post-consumer recycled polyester

Weight: 310 g/m²

Abrasion resistance: >100 000 Martindale (EN ISO 12947-2)

Flammability: BS EN 1021: 1-2 (Cigarette & match), BS 7176 Low & Medium Hazard, BS 5852 Section 4 Crib 5, DIN 4102 B1, UNI 9175 Class 1 IM, NF D 60-013

Light fastness: 6 (EN ISO 105 - B02: 2013)

Rubbing fastness: 4/4 (Wet/Dry) (EN ISO 105X12)

Pilling: 5 (EN ISO 12945-2)

Environmental facts: EU Ecolabel, Oeko-Tex® Standard 100, Indoor Advantage™ "Gold", non metallic dyestuffs, ISO 14001 certified company.

Design: Camira Design Studio

Produced in: United Kingdom

Cleaning & disinfection: Washable to 60 °C and bleach cleanable (For further info follow Camira's cleaning guidelines – www.camirafabrics.com)



SELECT (GABRIEL) - PRICE GROUP 2

Select is a classic woolen fabric with a tightly woven relief structure, combining excellent softness, stretch and durability. Its rich texture with the interplay of light and shadow add depth in all the colours in the palette.

Composition: 85% New Zealand wool, 15% polyamide

Abrasion resistance: 200 000 Martindale (EN ISO 12947-2)

Flammability: BS EN 1021: 1-2, BS 5852 0&1, BS5852 Crib 5, CA TB 117-2013, IMO MSC 307(88) Annex 1 part 8/MED registration IMO

Light fastness: 5-8 (EN ISO 105 - B02)

Rubbing fastness: 4-5/4-5 (Wet/Dry) (EN ISO 105X12)

Pilling: 4 (EN ISO 12945-2)

Environmental facts: EU Ecolabel, Oeko-Tex® Standard 100, 100% free of heavy metals, ISO 14001 certified company

Design: Cenk Kivrikoglu

Produced in: Lithuania

Cleaning: Professional dry cleaning (For further info follow Gabriel's cleaning guidelines – www.gabriel.dk)



CAPTURE (GABRIEL) - PRICE GROUP 3

Capture is a lightly felted and multi-coloured wool fabric combining softness, stretch and strenght. It fuses light and dark colours to a refined melange pattern in subtle nuances, which add richness and depth to the design.

Composition: 85% New Zealand wool, 15% polyamide

Abrasion resistance: 200.000 Martindale (EN ISO 12947-2)

Flammability: BS EN 1021: 1-2 (Cigarette & match), BS 5852 Part 1 0,1 (Cigarette & match), CA TB 117-2013, Class Uno UNI 9175 Class 1 IM

Light fastness: 5-7 (EN ISO 105-B02)

Rubbing fastness: 4-5/4-5 (Wet/Dry) (EN ISO 105X12)

Pilling: 4-5 (EN-ISO 12945-2)

Environmental facts: EU Ecolabel, Oeko-Tex® Standard 100, 100% free of heavy metals, ISO 14001 certified company

Design: Cenk Kivrikoglu

Produced in: Lithuania

Cleaning: Professional dry cleaning (For further info follow Gabriel's cleaning guidelines – www.gabriel.dk)



OCEANIC (CAMIRA) - PRICE GROUP 3

Oceanic is made from 100 % post-consumer recycled polyester yarn where 90% are created from post-consumer plastic bottles diverted from landfill and 10% is upcycled marine plastic(from marine litter). It is a fabric born out of the SEAQUAL Initiative designed to combat marine plastic pollution and achieve a waste free environment. Oceanic has a two coloured diagonal structure with a matte surface and soft touch.

Composition: 100 % post-consumer recycled polyester, including 50% SEAQUAL yarn

Weight: 497 g/m2 ±5%

Abrasion resistance: >100 000 Martindale (EN ISO 12947-2)

Flammability: BS EN 1021: 1-2 (Cigarette & match), BS 7176 Low, BS 7176 Medium Hazard with EnviroFlam5, CA TB 117-2013

Light fastness: 5 (EN ISO 105 - B02: 2013)

Rubbing fastness: 4/4 (Wet/Dry) (EN ISO 105X12)

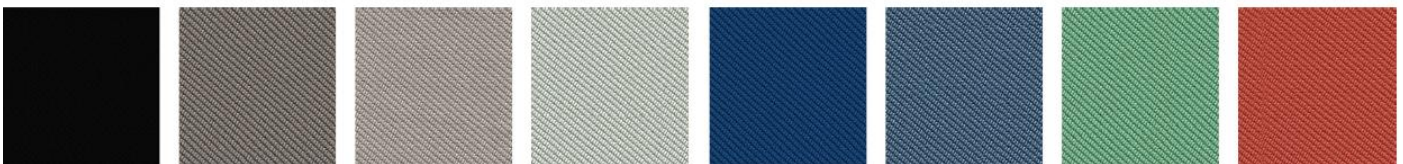
Pilling: 4 (EN ISO 12945-2)

Environmental facts: EU Ecolabel, Oeko-Tex® Standard 100, Indoor Advantage™ "Gold", non metallic dyestuffs, ISO 14001 certified company.

Design: Camira Design Studio

Produced in: United Kingdom

Cleaning & disinfection: Washable at 60 ° C and bleach cleanable (For further info follow Camira ´ s cleaning guidelines – www.camirafabrics.com)



STEP (GABRIEL) - PRICE GROUP 3

Step is unique in both texture and performance. With its delicate surface, Step is perceived as vivid and interesting. The texture with the fire-resistant Trevira CS yarn ensures that the fabric is suited for use in environments with high fire safety and durability requirements.

Composition: 100% Trevira CS

Weight: 336 g/m²

Composition: 100% Trevira cs

Abrasion resistance: 100 000 Martindale (EN ISO 12947-2)

Flammability: BS EN 1021: 1&2 (Cigarette & match), BS 5852 0&1 (Cigarette & match), BS 5852 Crib 5, CA TB 117-2013, MED Certificate IMO, Class Uno UNI 9175 Class 1 EMME, ÖNORM

Light fastness: 5-7 (EN ISO 105 - B02)

Rubbing fastness: 4-5/4-5 (Wet/Dry) (EN ISO 105X12)

Pilling: 4-5 (EN ISO 12945-2)

Environmental facts: EU Ecolabel, Oeko-Tex® Standard 100, 100% free of heavy metals, ISO 14001 certified company

Design: Inger Mosholt Nielsen

Produced in: Lithuania

Cleaning: Professional dry cleaning (For further info follow Gabriel's cleaning guidelines www.gabriel.dk)



SYNERGY (CAMIRA) - PRICE GROUP 3

Epitomising natural simplicity, Synergy is a wool rich fabric which is at once both irresistibly soft and ultra-high performing. Delicately felted, with a beautifully relaxed drape, the understated aesthetics showcase the intriguing coloration of this considered textile.

• **Composition:**

- 95% wool
- 5% polyamide

• **Weight:** 400 g/m²

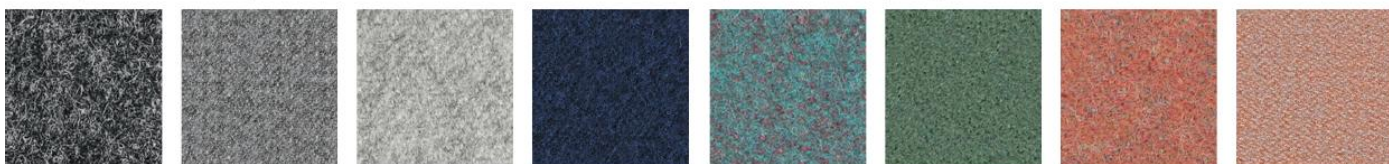
• **Certificates:**

- **Abrasion resistance:** 100000 Martindale cycles (BS-EN ISO 12947-2)
- **Pilling resistance:** 4 (BS-EN ISO 12945-2)
- **Flammability:** cigarette (BS-EN 1021-1)
- **Flammability:** match (BS-EN 1021-2)
- **Flammability:** (UNI 9175 Class 1IM)
- **Light fastness:** 5 (ISO 105-B02)

• **Maintenance:**

- -vacuum regularly
 - -use dry-clean preparations
 - -do not bleach
-

Because of the fact that the fabric Synergy is composed of 95% natural fiber, each of the batches shows variations in shade, which may be visible in products of follow-up orders. Additionally, an inherent feature of all natural fibers is the tendency to delicate fabric pilling.



STEELCUT 3 (KVADRAT) - PRICE GROUP 4

Steelcut 3 is a unicoloured strong worsted wool and polyamide woven fabric, combining durability, soft touch and colour depth. The construction creates a three-dimensional surface resembling small pyramids or steel points. Despite its complex weaving technique, it has a simple and precise expression.

Composition: 90% worsted new wool, 10% polyamide

Weight: 825 g/lm

Abrasion resistance: 100 000 Martindale (EN ISO 12947-2)

Flammability: BS EN 1021: 1-2 (Cigarette & match, CA TB 117-2013, BS 5852 Crib 5 (with treatment), BS 5852 part 1, IMO FTP Code 2010 Part 8, NF D 60 013, NFPA 260, UNI 9175 1IM, ÖNORM B1/Q1, AS/NZS 3837 Class 2, ASTM E84 Class A Unadhered, ASTM 84 Class B Adhered

Light fastness: 5-6 (EN ISO 105-B02)

Rubbing fastness: 3-5/4-5 (Wet/Dry) (EN ISO 105X12)

Pilling: 3-4 (EN ISO 12945-2)

Environmental facts: EU Ecolabel, 100% free of heavy metals, ISO 14001 certified company, GREENGUARD Gold

Design: Frans Dijkmeijer, Giulio Ridolfo (updated colourways)

Produced in: United Kingdom

Cleaning: Professional dry cleaning with tetrachloroethylene, normal process (For further info follow Kvadrat's cleaning guidelines – www.kvadrat.dk)



STEELCUT TRIO 3 (KVADRAT) - PRICE GROUP 4

Steelcut Trio 3 is a strong worsted wool and polyamide woven fabric, made with three different coloured yarns. The colours and the special weave create a three-dimensional surface where the colours seem to change depending on the angle of perspective. Like Steelcut 3, despite the complexity of the textile's innovative weave, it has a simple, precise expression.

Composition: 90% worsted new wool, 10% polyamide

Weight: 770 g/lm

Abrasion resistance: 100 000 Martindale (EN ISO 12947-2)

Flammability: BS EN 1021: 1-2 (Cigarette & match, CA TB 117-2013, BS 5852 Crib 5 (with treatment), BS 5852 part 1, BS 5852 ignition source 3, IMO FTP Code 2010 Part 8, NF D 60 013, NFPA 260, UNI 9175 1IM, ÖNORM B1/Q1, AS/NZS 3837 Class 2, GB 50222 B1 with treatment (Chinese)

Light fastness: 6-7 (EN ISO 105-B02)

Rubbing fastness: 3-5/4-5 (Wet/Dry) (EN ISO 105X12)

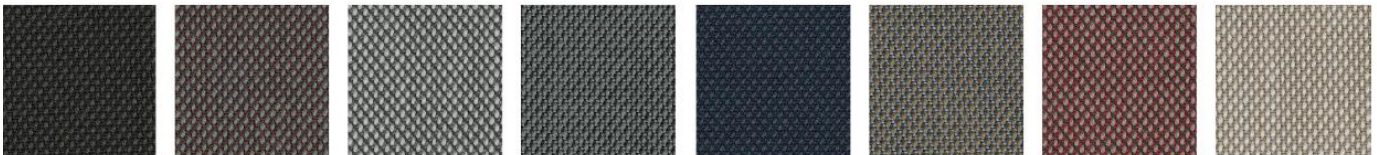
Pilling: 4 (EN ISO 12945-2)

Environmental facts: EU Ecolabel, 100% free of heavy metals, ISO 14001 certified company, GREENGUARD Gold

Design: Frans Dijkmeijer, Giulio Ridolfo (updated colourways)

Produced in: United Kingdom

Cleaning: Professional dry cleaning with tetrachloroethylene, normal process (For further info follow Kvadrat's cleaning guidelines – www.kvadrat.dk)



LEATHER - PRICE GROUP 5

Leather (standard) is a corrected grain leather made of European cattle hides. It is through dyed with chrome tannage. Fine embossed with a smooth touch.

Thickness: 0.8 -1.0 mm (+/-15%)

Flammability: BS EN 1021: 1-2 (Cigarette & match)

Light fastness: 5 (EN ISO 105-B02)

Rubbing fastness: Wet >4/5 250 - Dry>4 500 (IUF 450)

Environmental facts: ISO 14001 certified company

Produced in: Italy

Cleaning and care: Please follow the guidelines of the supplier www.marchettopellami.com



PREMIUM LEATHER (GMELICH) - PRICE GROUP 6

Ascot Leather Premium is a full grain semi-aniline premium leather made from South-German and Austrian cattle hides. It is mineral tanned (chrome) with a non solvent PU-finish. It has a semi-matt appearance with a soft feel.

Thickness: 1,0 -1,2mm

****Flammability:** BS EN 1021: 1-2 (Cigarette & match), CA TB 117-2013

Light fastness: 5 (EN ISO 105-B02)

Rubbing fastness: Wet >3/4 80 - Dry>4 500 (EN ISO 11640)

Environmental facts: Blue Angel ISO 14001 certified company

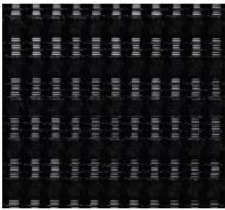
Produced in: Germany



SIEŤOVINY

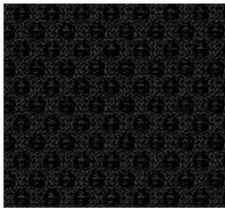
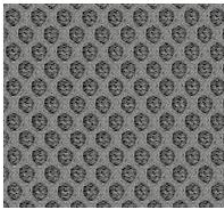
Mesh

Action / Ariz



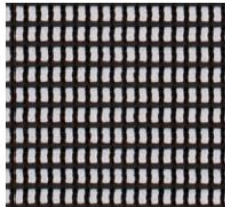
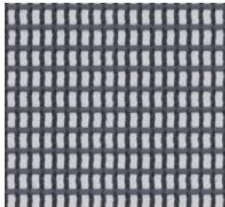
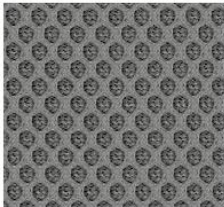
Mesh

Bit / Veris



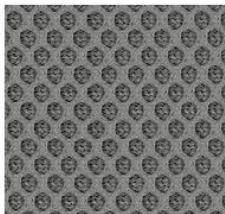
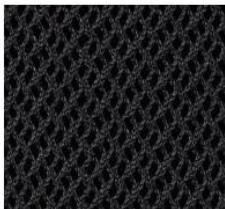
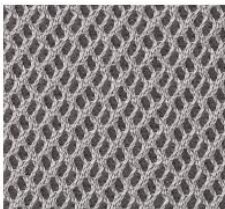
Mesh

LightUp / Xenon Net




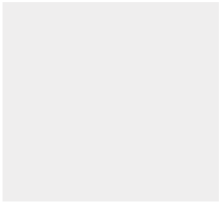

Mesh

Accis^{Pro} / Violle



PLASTY

Plastics	Ariz			
				
				

Plastics	Accis ^{Pro} / Ellie ^{Pro} / Light ^{Up} / Trillo ^{Pro} / Violle			
				

Plastics	Mickey			
				

Plastics / frames	Zoo			
				

SKLO

Tempered glass

Chic Tables

