

## Finishes / Povrchová úprava

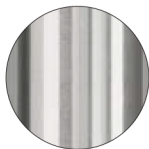
Steel and stainless steel / Oceľ a nehrdzavejúca oceľ

---



**CR**

Chromed steel



**ST**

Satinized steel



**CO**

Matt chromed steel



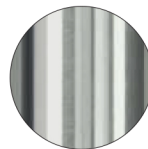
**CN**

Black chromed steel



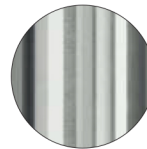
**LU**

Polished s/steel



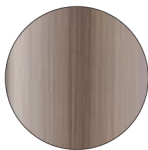
**AC**

Brushed s/steel



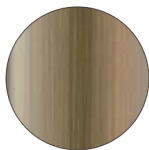
**AC 316**

Brushed s/steel AISI 316  
for outdoor



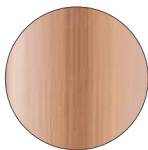
**BS**

Antique bronzer steel



**OA**

Antique brass steel



**RM**

Antique copper steel



**TN**

Titanium steel

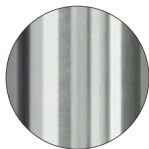
Aluminium / Hliník

---



**LU**

Polished aluminium



**AS**

Satinized aluminium



**AA**

Anodized aluminium

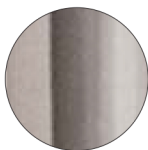


**TN**

Titanium

Nichel / Nikel

---



**AS**

Satinized nichel